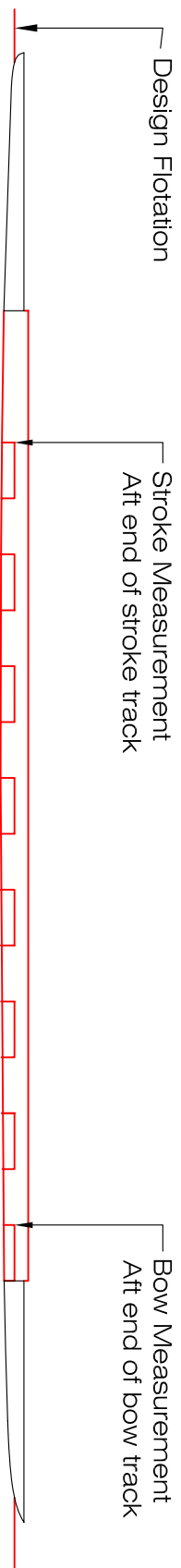


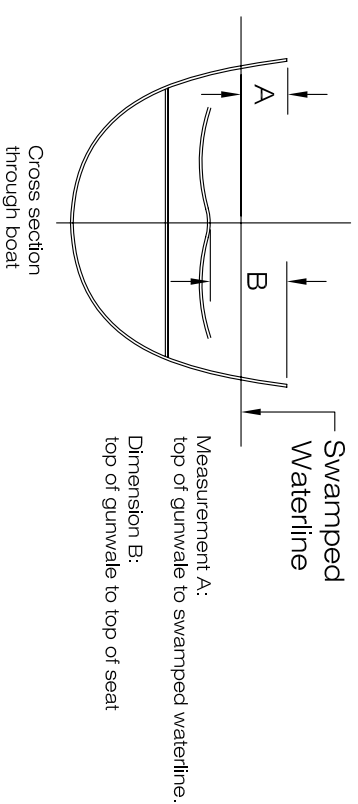
FISA Boat Flotation Test Protocol

for eights

Crews should be the correct weight for the construction of the boat. The crew and coxwain will be seated in normal position with the legs down. The boat will be flooded until it will no longer contain any more water. Bow and stroke will then measure the distance from the top of the gunwale to the water surface. Measurement A and have the information recorded. When the boat is removed from the water Measurement B is taken and recorded. The calculation is shown below to determine the seat height above or below the water.



	Bow	Stroke	
Measurement A			millimeters
Measurement B			millimeters
Subtract B from A			millimeters



A negative number indicates that the seat is below the swamped waterline